

Y350R Power Module

Description

The Y350R Power Module is used to supply Class 2, unfiltered 24 VDC power to System 350™ controls.

Features

- 5-pin, plug-together connector
- surface or DIN rail mounting

Application

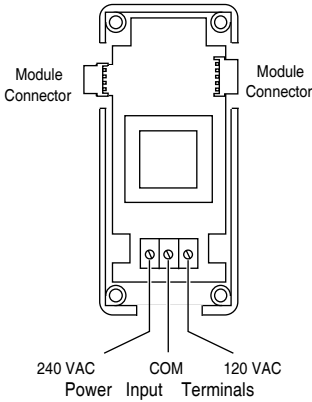
Use to provide unfiltered 24 VDC power to System 350™ Controls.

Selection Chart

Code Number	Description
Y350R-1C	Y350 Power Module



Y350R

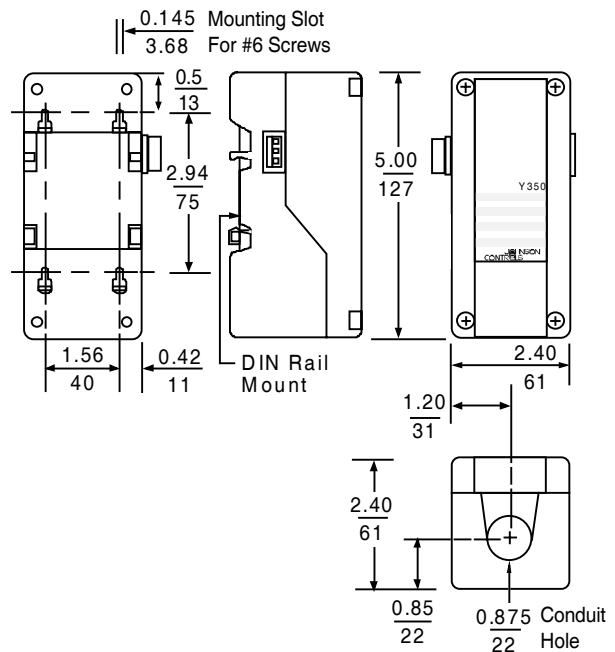


Interior of Y350R

y350pow.eps

Technical Specifications

Y350R Power Module		
Case and Cover Material	NEMA 1, high-impact thermoplastic	
Input Voltage	120/240 VAC 50/60 Hz	
Output Voltage	Class 2, 24 VDC unfiltered, 10 VA maximum	
Ambient Temperature	Operating	-30 to 150°F (-34 to 66°C)
	Shipping	-40 to 185°F (-40 to 85°C)
Humidity	0 to 95% RH non-condensing	



Y350R Dimensions, in. (mm)

accessdim.eps